

Instructions for ALS Type 475 Lubricator

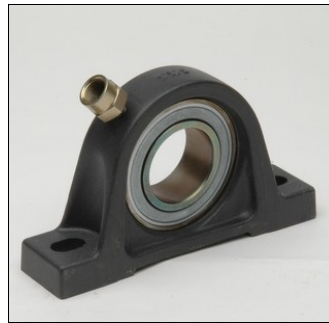
Electronically monitored greasing with microswitch setting



Pre-grease bearing with grease gun



Remove grease nipple from bearing with wrench



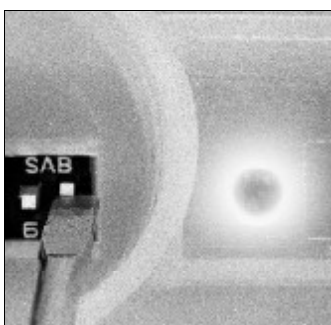
Screw in adapter from G1/2 to M8x1, M10x1, G1/8, G1/4



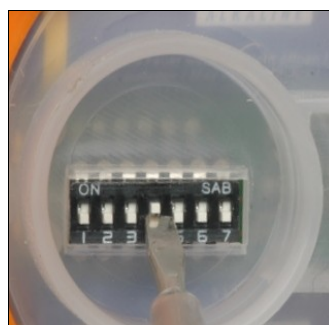
Screw on lubricator. Standard thread G1/2



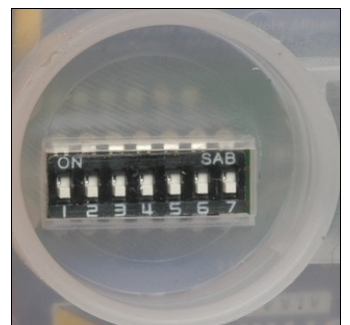
Remove protective lid and activate lubricator



Set DIP-switch 7 to ON. Green LED blinks briefly. Red LED blinks repeatedly in intervals of 15.

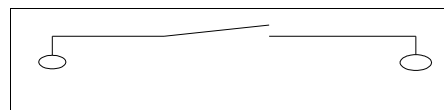
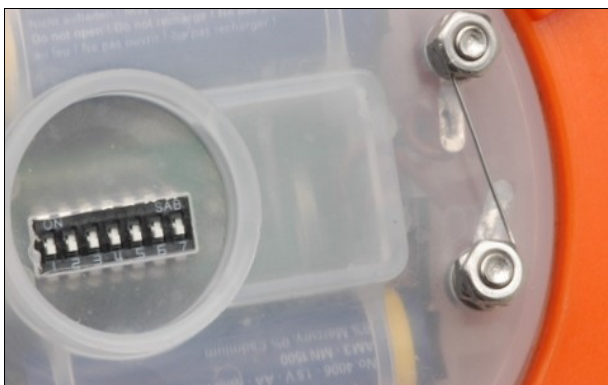


Set DIP-switches to select grease discharge setting (see table) Green LED blinks every 30 seconds



To turn off: click all switches to bottom position

Synchronization with machine time



N/O contact

Settings of cable unit identical with standard lubricator (see above). Extend wire and connect to end switch or contactor with floating contact.

No external power supply necessary.

Tips:

- Before installing the lubricator, make sure to pre-grease lubrication point first.
- Fill pipes or hoses with lubricant before activating lubricator.
- Hose or pipe extension of up to 0.5 m possible when using grease. A maximum of 2.5m are recommended when using oil.
- When using oil as lubricant, the time setting should be increased by 40 % to allow for the lesser resistance of oil. It is also recommended to use a non-return valve to avoid the oil from running out of the hoses or pipes.