

Operating Instructions: ALS Type 475 Lubricator

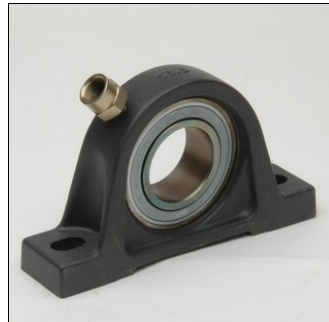
Electronically monitored greasing with microswitch setting



Pre-grease bearing with lever grease gun



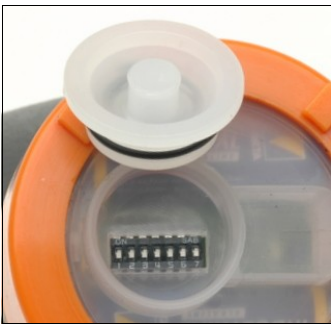
Remove grease nipple from bearing with wrench



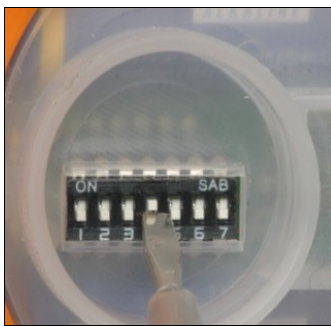
Screw in adapter from G1/2 to M8x1, M10x1, G1/8, G1/4



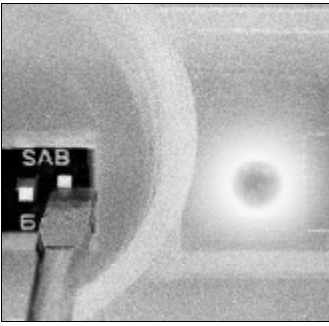
Screw on lubricator standard thread G1/2



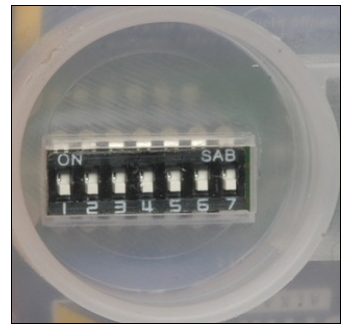
Remove protective lid and activate lubricator



Set DIP-switches to select grease discharge setting (see table)

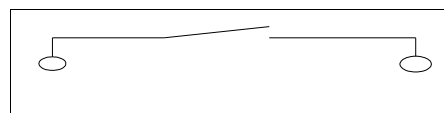
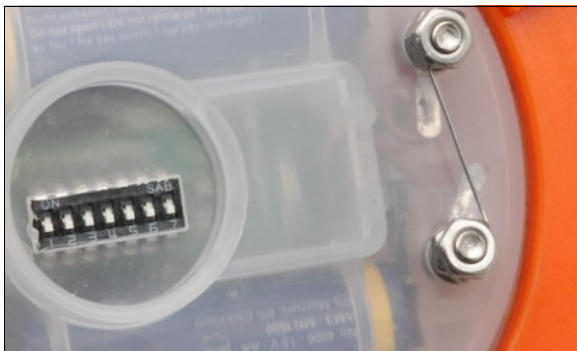


and select DIP-switch 7 to activate unit. Indicator light blinks approx. every 20 sec



To turn off: click all switches to bottom position

Synchronisation with running machine



Relay

Settings of cable unit identical with standard lubricator (see above). Extend wire and connect to limit switch or contactor with floating contact.

No external power supply necessary.

Benefits:

- Varying of lubrication time or combinations of different grease discharge settings possible (see page 2 for setting combinations)

Tip:

- Before screwing in the lubricator, make sure to pre-grease lubrication point first. For example with a grease gun.
- Often a bearing is clogged or the grease inside has solidified. The pre-greasing ensures flawless and troublefree lubrication.