

Operating Instructions: ALS Type 125 Lubricator

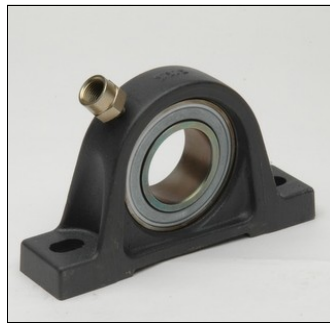
Electronically monitored greasing with microswitch setting



Pre-grease bearing with lever grease gun



Remove grease nipple from bearing with wrench



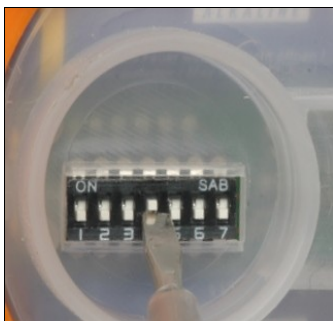
Screw in adapter from G1/4 to M6x1, M8x1, M10x1, G1/8



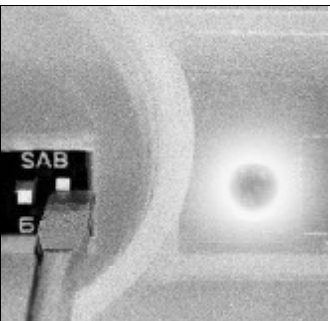
Screw on lubricator, standard thread G1/4



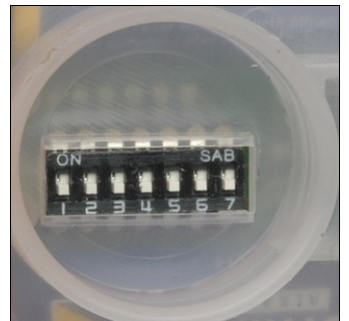
Remove protective lid and activate lubricator



Set DIP-switches to select grease discharge setting (see table)

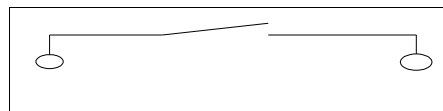


and select DIP-switch 7 to activate unit. Indicator light blinks approx. every 20 sec



To turn off: click all switches to bottom position

Synchronisation with running machine



Relay

Settings of cable unit identical with standard-lubricator (see above). Extend cord and connect to limit switch or contactor with floating contact.

No external power supply necessary.

Benefits:

- Varying of lubrication time or combinations of different grease discharge settings possible (see page 2 for setting combinations)
- Standard-type (without cable) with explosion-protection T3 resp. T4 (ATEX).

Tip:

- Before screwing in the lubricator, make sure to pre-grease lubrication point first. With a grease gun for instance.
- Often a bearing is clogged or the grease inside has solidified. The pre-greasing ensures flawless and troublefree lubrication.